



MARLOW HOUSE

LLOYD'S AVENUE, EC3

Newly refurbished fully fitted office space
in the heart of the City.
Available units from 2,530 sq ft up to 4,149 sq ft
(total availability 10,053 sq ft)



TIMELESS MEETS MODERN



Building reception

The building is located on the eastern side of Lloyd's Avenue, on this vibrant EC3 thoroughfare, sitting within close proximity to the new City Core tower cluster and also Aldgate Square.

Marlow House is an attractive art deco building providing a striking façade within the Lloyd's Avenue Conservation Area, and features a redesigned manned reception. The floors benefit from excellent natural light and the available offices have been refurbished to enhance the base build and services including new plaster ceilings, strip and hung LED lighting, new windows with fitted blinds, and new floor finishes. The common parts include newly fitted WCs throughout and two new passenger lifts together with enhanced end-of-journey facilities.



Reception desk



Exterior detail



Building reception



Entrance



Cycle pod and lockers

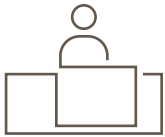


Shower and WC

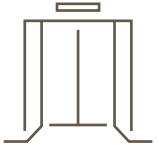


Bathroom

HIGHLIGHTS



Contemporary
manned reception



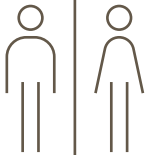
Two new automatic
passenger lifts



Cycle pod storage and
shower facilities



VRF fan coil
air-conditioning



New WC's



Turnkey
offices available

WORK READY SPACE



The floors have efficient layouts to include kitchenettes, meeting rooms, and calling booths. Selected units are delivered fully touch down & work ready with plug & play functionality.

For ease of comms access, new Cat 6 flood wired cabling has been installed and linked to comms rooms. Backbone Connect fibre runs throughout the building via the riser.

AVAILABLE AREAS

Floor	Section	Spec.	Sq ft	Sq m	Availability
5th	North	-	-	-	Let
5th	South	-	-	-	Let
3rd	North	-	-	-	Under offer
2nd	South	-	-	-	Let
1st	South	CAT A+	3,374	313.4	Available
G	-	CAT A	4,149	385.5	Q3 2027
LG	-	CAT A	2,530	235.0	Q3 2027
Total			10,053	933.9	

NB: Ground & Lower Ground floors interconnect via an internal staircase to provide a self contained unit of 6,679 sq ft.



Meeting room



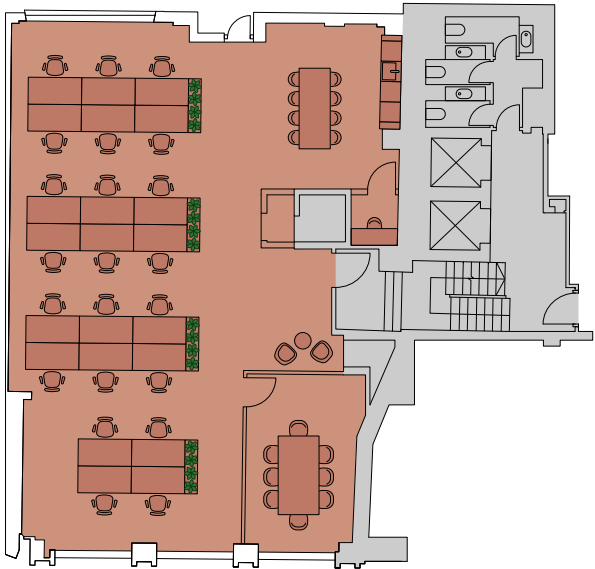
Workspace

INDICATIVE LAYOUTS

NORTH

1,751 sq ft / 162.7 sq m

- 22x Workstations
- 1x 8-person meeting room
- 1x Kitchen
- 1x Private working space
- 2x Breakout areas



3rd Floor

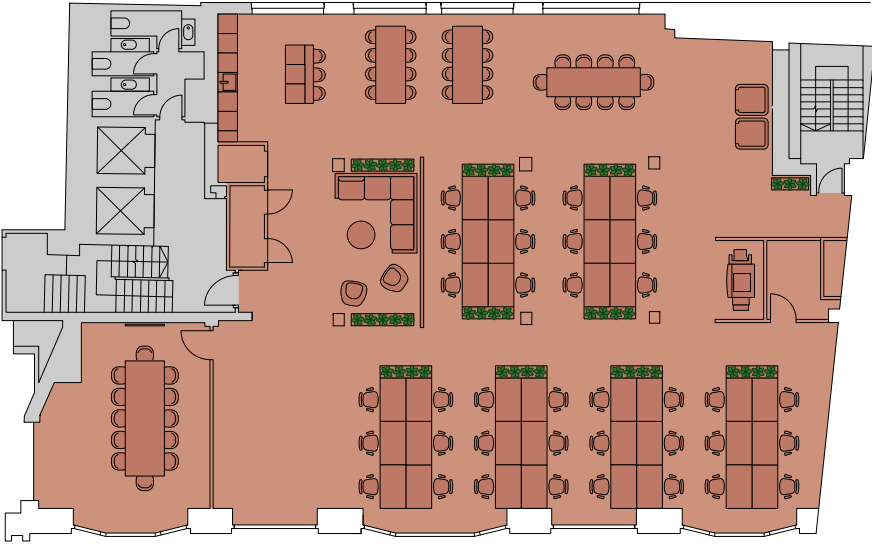
Lloyd's Avenue



SOUTH

3,374 sq ft / 313.4 sq m

- 36x Workstations
- 1x 12-person meeting room
- 1x Kitchen
- 1x Co-working space
- 2x Breakout areas
- 2x Phonebooths



1st Floor

Lloyd's Avenue





Interior detail



Workspace



Breakout & Kitchen

CAT A LAYOUTS

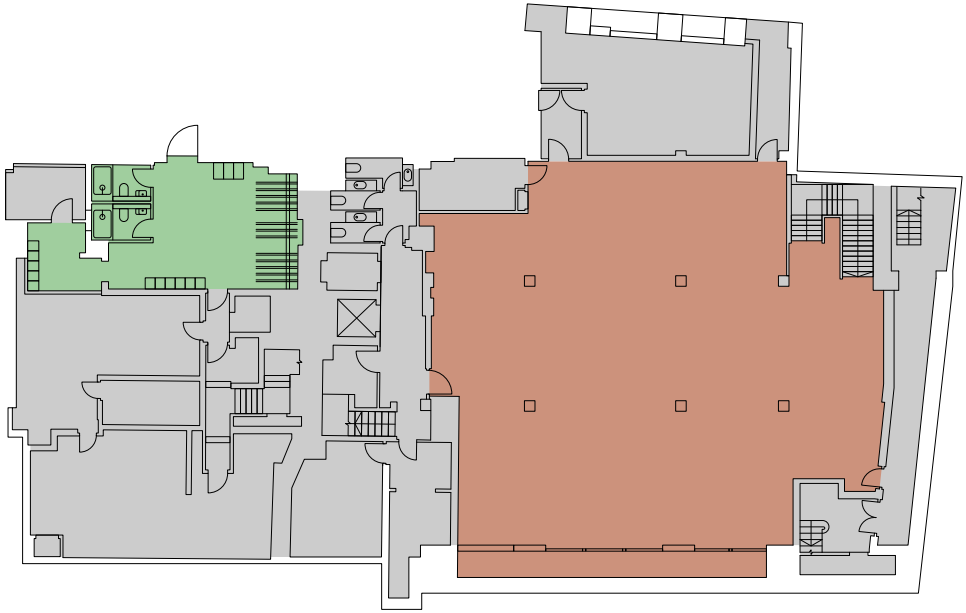
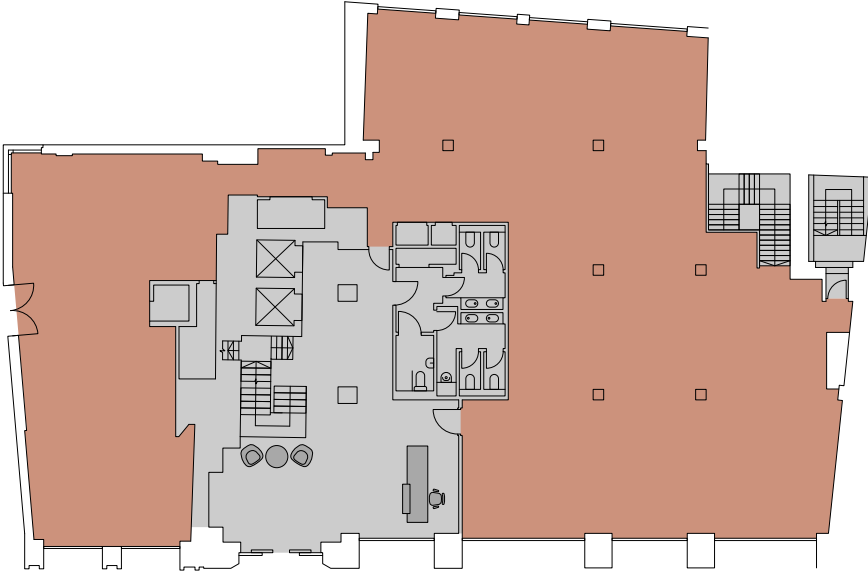
GROUND FLOOR

4,149 sq ft / 385.5 sq m

LOWER GROUND

2,530 sq ft / 235 sq m

■ End-of-journey facilities



Lloyd's Avenue



Lloyd's Avenue



Workspace

CAT A+



Breakout space



Breakout space

SPECIFICATION

Façade

- External façade stonework cleaned and redecorated.
- New Reynaers Masterline double glazed windows front elevation floors 4th to 7th floors and rear elevation 1st to 7th floors.

Refurbishment of existing steel framed windows and bays with ornate spandrel panels.

Entrance

- New automatic aluminium sliding doors with fixed side panels with bronze effect finish to match windows.
- New Paxton access control and intercom & system.

Demise Entrance Doors & Lift Lobby Landings

- New internal timber painted fire doors and frames with glazed vision panels and manifestation.
- New ironmongery.
- Landlord operated programable Paxton door entrance system.
- New surface mounted feature wall lights to staircase.
- Solid surface plaque with tenant signage to every office entrance.
- New European heritage porcelain marble effect floor tiles throughout the entrance & lift lobbies.

WC's

- New IPS wall panels with concealed systems and pipework.
- New Duravit wall mounted WC with Geberit flush plate.
- New panelled vanity units with new soap and paper towel dispenser.
- New Murano counter top and splashback.
- New Duravit Vanity basin with chrome monobloc tap.
- Matching Murano floors throughout.
- Retained doors and resprayed.

Common Parts Finishes

- New Intralux Elite black entrance matting with bronze finish surround.
- New European heritage porcelain marble effect floor tiles throughout the entrance hall.
- New planting.
- New green marble reception and white solid surface reception desk with brass anodised logo.
- New Patina Brass perforated cladding with herringbone detail.
- New plasterboard ceiling with new Flos surface mount ceiling light fittings.
- New Bocci cluster pendent fitting.
- New tenant directory board white solid surface material with aluminium cut out lettering.
- New furniture Harbor Laidback lounge chair with dark marble ceramic coffee table.
- New glass balustrade to stairs with retained art deco handrail throughout the stair well.
- Stair covering in new EGE beige carpets and aluminium nosings with green insets.
- New free standing feature Flos light.
- Floor level signage cut in Patina brass cladding floor to ceiling panel to match reception.

Building Services Design

- The building services design has been developed based upon a VRF perimeter comfort cooling and heating system with individual control per floor. Perimeter floor standing units will serve floors 1st to 7th with ceiling mounted fan coil units serving the basement and ground floors. Fresh air will be supplied by centralised plant located at roof and basement level. A centralised boosted hot and cold water system will be provided, served from a basement storage tank, with twin booster pump set and an electric unvented water cylinder.
- All services will be distributed to the office floors via dedicated services risers incorporated in the main core.

Structural

- Existing foundations retained.
- The building has an existing reinforced concrete frame.
- The existing office floor areas have the capacity to provide 2.5 KN/m² imposed load and 1.0 KN/m².

End of Journey Facilities

- Refurbished cycle store with new showers and heated Z drying lockers.
- 13 new cycle bays.
- 9 folding bike lockers.
- New Turvec bike repair pump.
- Teak slattered bench.
- Duravit towel hooks.
- New Neo Tiber slatted wipeable cladding board to locker room.
- Two new shower rooms:
 - Grestec floor and porcelain marble effect tiles
 - Duravit shower trays
 - Cross water single sliding shower door
 - Aqualisa electric shower Chrome finish
 - Duravit wall mounted WC and Durvite hand basin with chrome Monobloc tap

Base Build CAT A Office Specification

- New: Plasterboard MF ceilings.
- Floor: Galvanised steel encapsulated raised access floor system. Tile size: 600 x 600mm.
- Walls: Vinyl matt white emulsion finish.
- Painted timber skirtings to lift lobby and cores.
- Ceiling and Bulkheads.
- Metal perforated clip in ceiling tiles to office areas.
- New strip LED suspended lighting (not suspended 5th floor).
- New roller blinds grey finish front and back windows.
- Small Power distribution throughout.
- New bespoke floor mounted casings.

Design Criteria

- **Winter:**
 - Outside Temperature -4°C 100% Saturation
 - Internal offices 22°C ± 2°C
 - Reception Area/Lift lobbies 23°C ± 2°C
- **Summer:**
 - Outside Temperature 30°C db / 20°C wb
 - Internal offices 22°C ± 2°C
 - Reception Area/Lift lobbies 23°C ± 2°C
- **Occupancy density**
 - Offices at 1 person per 10 m²
- **Ventilation rates**
 - Offices: 12 litres/sec per person (based on assumed occupancy rate above)
 - Toilet extract: 8 air changes per hour

New Lifts

- Two new 8 person electric Wittur passenger lifts:
 - New lift motor plant
 - Mirrored half height / panel surrounds and recessed LED backed lighting
 - Floor finishes and panels replicate reception

Landlords finished CAT B (where delivered)

- New Howdens kitchenettes fir green cabinets:
 - Silestone Iconic works tops and splash back
 - Bosch integrated fridge freezer and dishwasher
 - Zip Tap hot and cold water
 - Bosch building microwave
 - Localised electric water heater serving T point
- Reform Ege Transition leaf light grey carpet tiles (in part).
- LVT Flooring (in part).
- Data CAT 6 and Backbone fibre connection.
- New Crittall effect acoustic single glazed partitions laminated glass.

CITY COOL

Numerous local first class restaurants and amenities are in close proximity.



Aldgate Square



The Wolseley



Leadenhall Market



Garden at 120



The Four Seasons



Local gym on 40 Mark Lane

Restaurants

- 1 Barbie green
- 2 Eataly
- 3 The Ivy City Garden
- 4 Duck & Waffle
- 5 Enoteca da Luca
- 6 Clays
- 7 Hawksmoor
- 8 Goodman
- 9 Temper
- 10 M Threadneedle St
- 11 Le Relais de Venise l'Entrecôte
- 12 Coya
- 13 Lasagneria Italiana
- 14 Haz
- 15 Fazenda
- 16 Bob Bob Ricard
- 17 Caravaggio
- 18 Coq d'Argent
- 19 Vinoteca
- 20 Brigadier
- 21 Caravan
- 22 1 Lombard St
- 23 Hispania
- 24 Gaucho
- 25 José Pizarro
- 26 Blacklock
- 27 Camino
- 28 La Dame de Pic

Bars

- 1 Fox Fine Wines
- 2 Swingers Crazy Golf
- 3 Tower 42
- 4 Forge
- 5 Fortnum's Bar
- 6 The Folly
- 7 Craft Beer Co
- 8 Moniker
- 9 Oyster Shed
- 10 Brewdog

Cafes

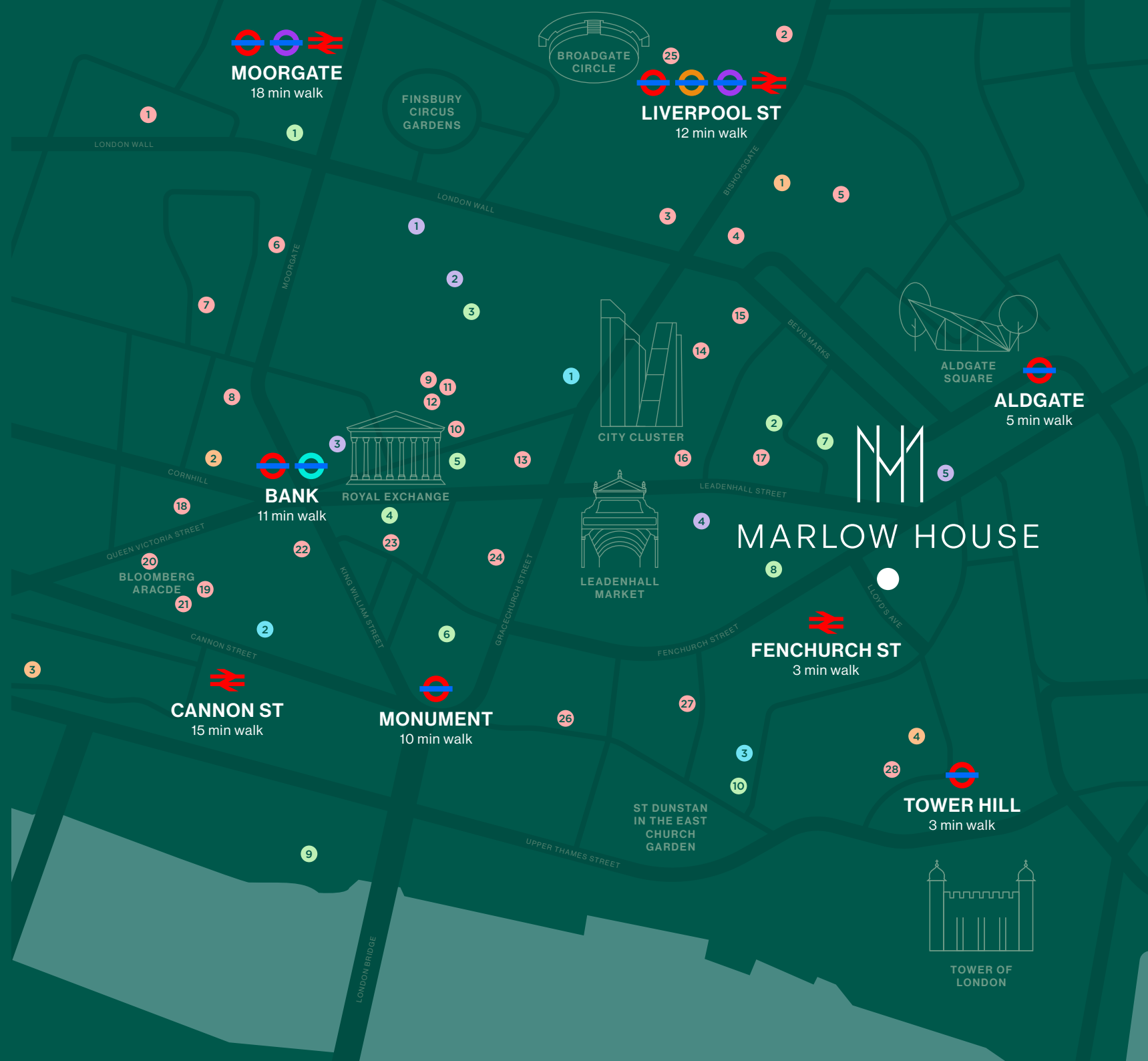
- 1 Ole & Steen
- 2 Soho Coffee Co
- 3 Grind
- 4 Red Lion Coffee
- 5 Ozone Coffee

Hotels

- 1 Pan Pacific
- 2 The Ned
- 3 Vintry & Mercer
- 4 Four Seasons

Leisure

- 1 Fitness First
- 2 Virgin Active
- 3 Third Space



LEASING POLICY

Lease Terms

A new flexible lease is available direct from the Landlord, for a term by arrangement.

Available floor by floor with the Ground & Lower Ground floor to be let together.

Rent, Service Charge and Business Rates

On application.

VAT

The property is elected to VAT which is therefore payable on rent and service charge.

Legal Costs

Each party to be responsible for their own legal costs incurred in this transaction.

EPC

The current EPC rating is B.

Viewings

Joint Agents Fisher German LLP and Cluttons LLP

PROFESSIONAL TEAM

Contractor

Artemis Interior Services Limited

Cost Consultant and Project Management

Fisher German LLP

Structural Consultant

Constructure Ltd

Architect

Gravity Design Associates Ltd

Building Services

Proair Consultants TBC



MARLOW HOUSE

LLOYD'S AVENUE, EC3

**fisher
german**

CLUTTONS

Ben Stanley

07974 529675

ben.stanley@fishergerman.co.uk

Doug Gordon

07884 408136

doug.gordon@fishergerman.co.uk

Ed Moore

07484 966182

ed.moore@cluttons.com

Elliot Jackman

07512 692605

elliott.jackman@cluttons.com

Please Note: Fisher German LLP and Cluttons give notice that: 1. They have no authority to make or give any representation or warranty on any property whether on their own behalf or on behalf of their clients or otherwise. 2. They do not owe any duty of care to you and assume no responsibility for any statements, representations, warranties or otherwise made in the particulars and you should not rely on those in the particulars. 3. The particulars are produced in good faith are set out as a general guide only and do not constitute or form an offer or a contract or part thereof. 4. Any photographs, descriptions, plans, measurements, distances and any other details in the particulars are approximate estimates only taken as the property appeared at the time and should not be relied upon as factually accurate. 5. Fisher German and Cluttons assume prospective purchasers/tenants have carried out inspections to satisfy themselves that the information in the particulars is correct. Some images featured are provided by Dave Parker Photography and Artemis Interiors. Illustration by Grace Armstrong, June 2026

Marketing: [Stuart Chapman Design](#)